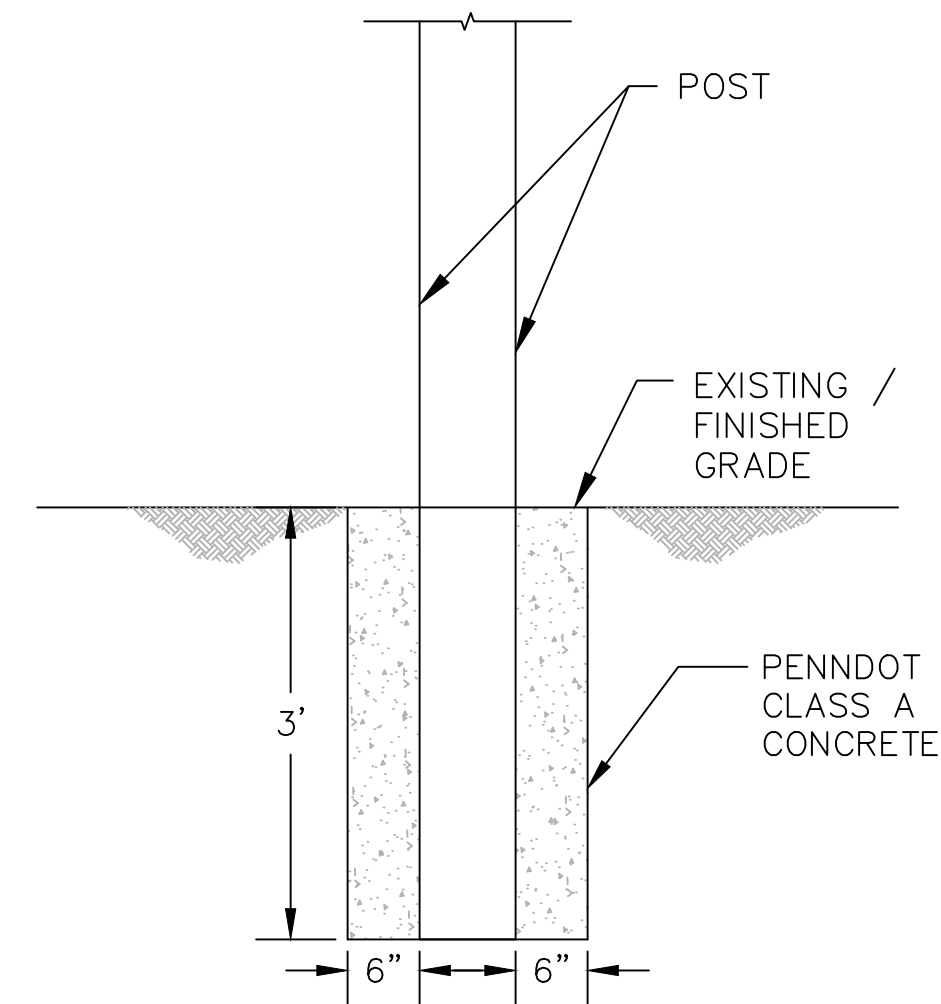
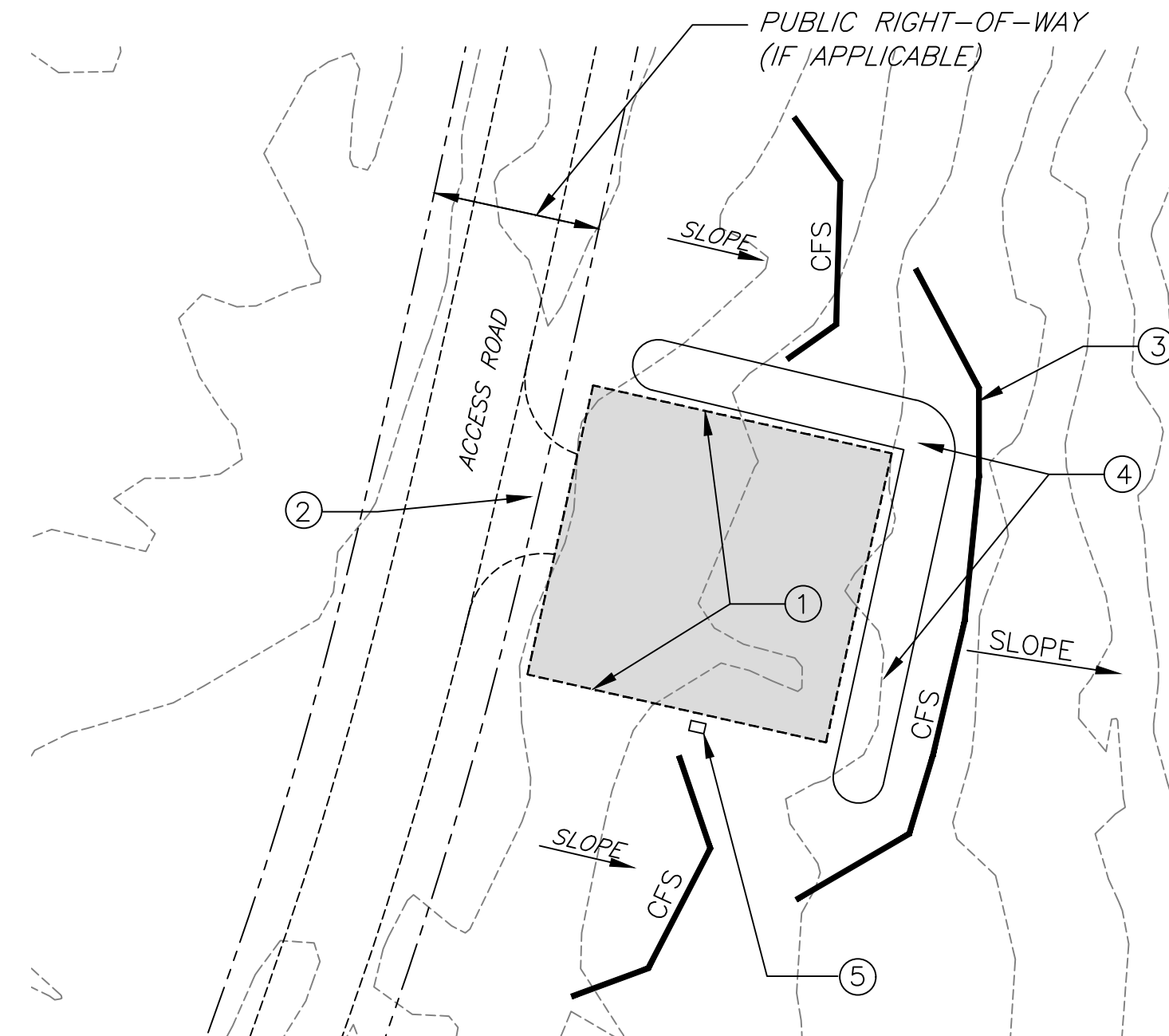


GENERAL NOTES:

1. THIS PROJECT IS LOCATED NORTH-EAST OF TIDIOUTE, PA ON STATE GAME LANDS (SGL) #86 IN DEERFIELD AND BROKENSTRAW TOWNSHIPS, WARREN COUNTY. THE INDIVIDUAL PROJECT SITES ARE LOCATED THROUGHOUT SGL #86 (SEE SHEET NO. 2). THE PROPERTY IS OWNED BY THE PA GAME COMMISSION (PGC).
2. WORK HOURS SHALL BE DURING NORMAL PGC BUSINESS HOURS MONDAY – FRIDAY, 7:45 AM TO 4:00 PM. DIFFERENT WORK HOURS MUST HAVE PRIOR WRITTEN APPROVAL BY THE PGC. REQUESTS FOR DIFFERENT WORK HOURS MUST BE SUBMITTED AT LEAST TWO DAYS IN ADVANCE.
3. SITES ARE ACCESSIBLE FROM PUBLIC ROADWAYS AND GAME LANDS ACCESS ROADS. COORDINATE ACCESS THROUGH ANY PGC GATES WITH PGC STAFF.
4. DO NOT BLOCK TRAFFIC ON PUBLIC ROADWAYS DURING CONSTRUCTION. DO NOT USE PUBLIC OR PRIVATE RIGHT-OF-WAY TO STAGE EQUIPMENT AND MATERIALS DURING CONSTRUCTION.
5. THE CONTRACTOR SHALL FURNISH AND INSTALL SIGNS, BARRICADES, WARNING TAPES, ETC. TO PROTECT AND LIMIT ACCESS TO WORK AREAS.



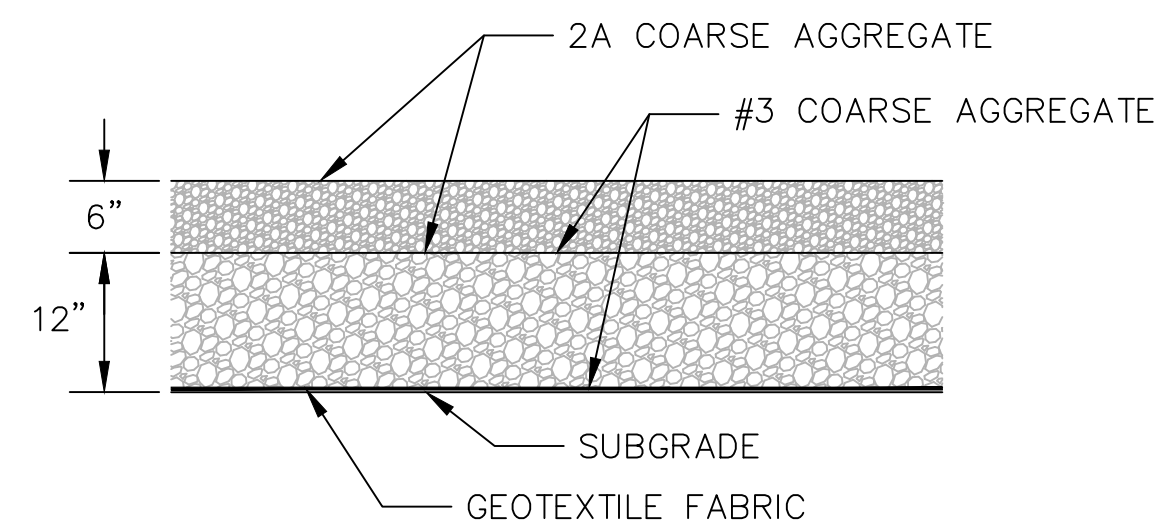
3-SIGN BACKER AND POST DETAIL
NOT TO SCALE



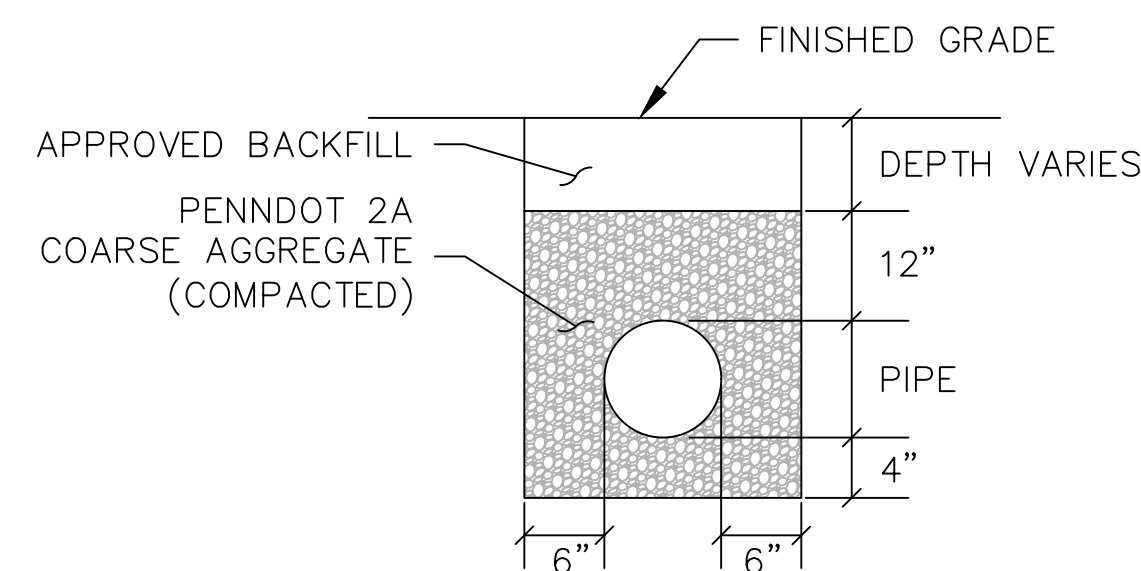
TYPICAL SITE DETAIL
NOT TO SCALE

CONSTRUCTION NOTES:

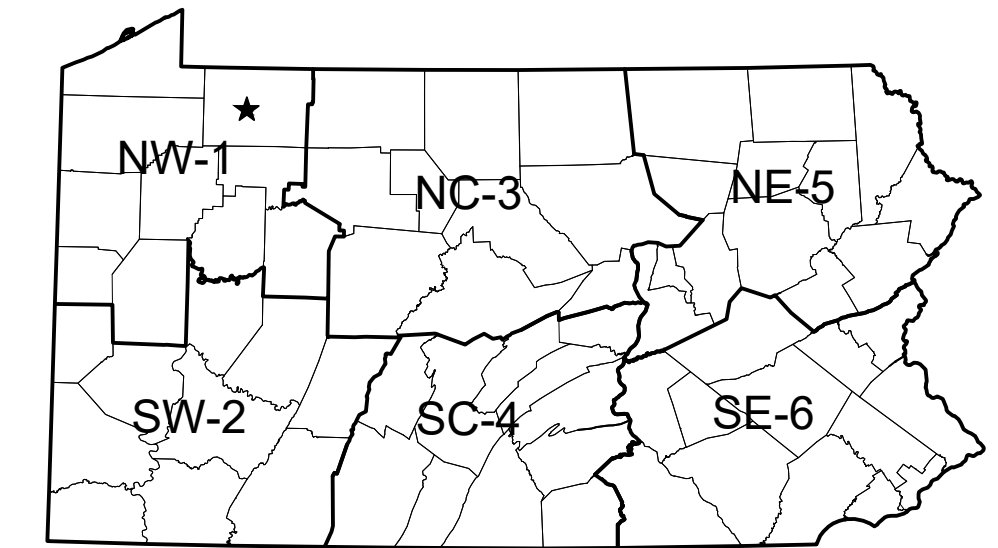
1. PROPOSED PARKING AREA. SEE SHEET NO. 2 FOR DETAILED SCOPE OF WORK AND REQUIRED PARKING AREA DIMENSIONS. GRADE AND SLOPE PARKING AREA TO CONFORM WITH EXISTING GROUND CONTOURS AND TO AVOID CONCENTRATING SURFACE WATER RUNOFF. COORDINATE FINAL LAYOUT WITH PGC STAFF BEFORE PROCEEDING WITH CONSTRUCTION.
2. EXISTING DRIVEWAY ENTRANCE (FOR PARKING AREAS LOCATED OFF OF ROADWAY – SOME PARKING AREAS ARE LOCATED ADJACENT TO ROADWAY). CLEAN WHEELS OF CONSTRUCTION VEHICLES OR PROVIDE ROCK CONSTRUCTION ENTRANCE TO AVOID TRACKING SEDIMENT ONTO PUBLIC ROADWAYS.
3. 12" COMPOST FILTER SOCK (CFS). INSTALL CFS PARALLEL WITH EXISTING GROUND CONTOURS AROUND PERIMETER OF SITE AND DISTURBED AREAS IN ACCORDANCE WITH DETAIL ON SHEET NO. 3. MODIFY CFS INSTALLATION AS REQUIRED TO ACCOMMODATE CONDITIONS AT INDIVIDUAL SITES. PROVIDE CFS AROUND PERIMETER OF TOPSOIL STOCKPILES.
4. TEMPORARILY STOCKPILE STRIPPED TOPSOIL THAT WILL BE REUSED FOR RESTORATION OF DISTURBED AREAS. PLACE (WINDROW) EXCESS EXCAVATED MATERIAL, TREES AND STUMPS ALONG SIDES AND/OR BACK OF PARKING AREA AT LOCATIONS THAT WILL MINIMIZE IMPACTS ON SURFACE WATER RUNOFF AND AS DIRECTED BY PGC STAFF.
5. 3-SIGN BACKER AND POST PROVIDED BY PGC (SEE DETAIL THIS SHEET). INSTALL AT LOCATION DETERMINED BY PGC STAFF.
6. RESTORE DISTURBED AREAS IN ACCORDANCE WITH TECHNICAL SPECIFICATIONS AND SOIL EROSION AND SEDIMENTATION CONTROL REQUIREMENTS.



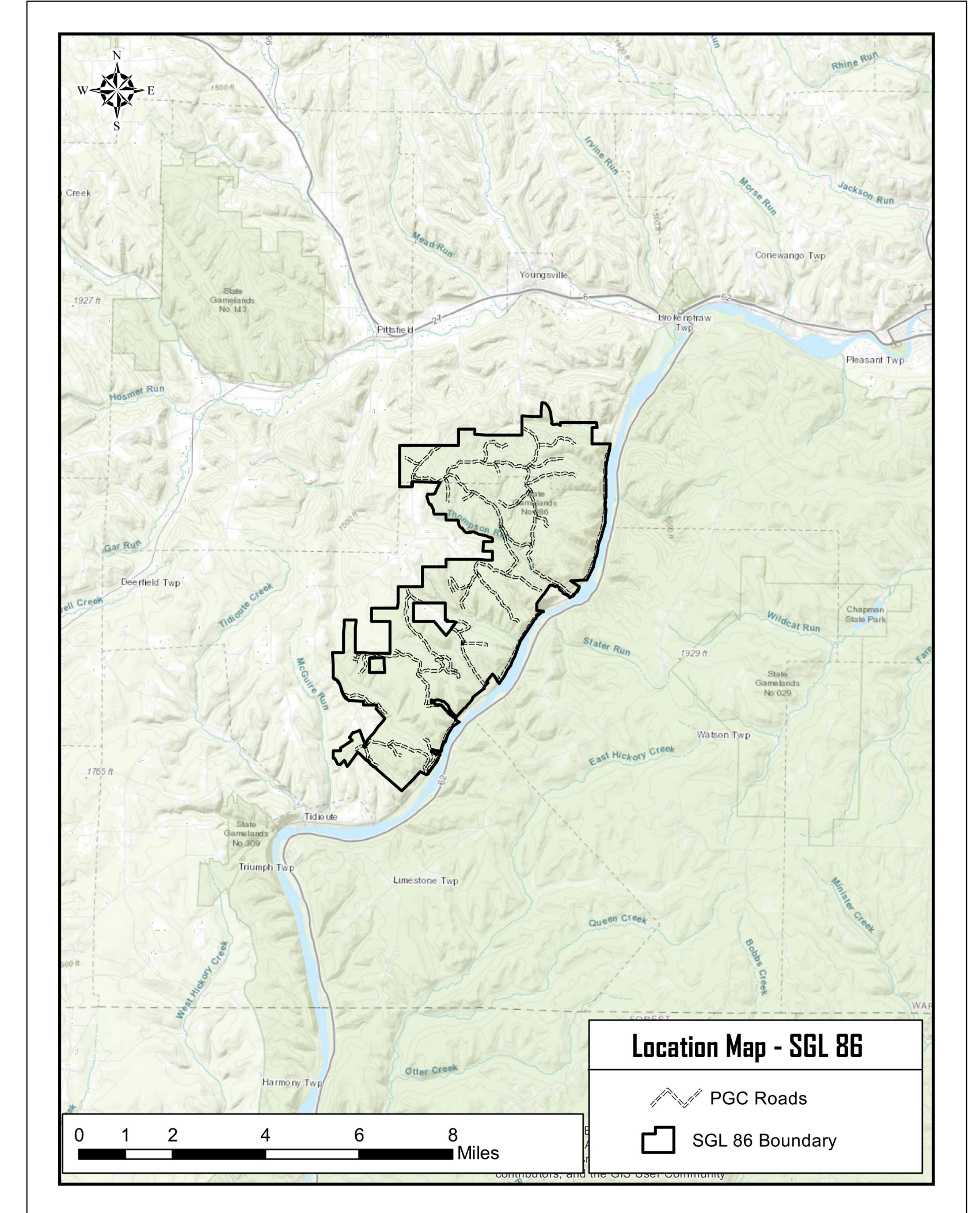
STABILIZED PARKING AREA DETAIL
NOT TO SCALE



PIPE TRENCH BACKFILL DETAIL
NOT TO SCALE



★ = GEO N41.75652°/W9.3293°W

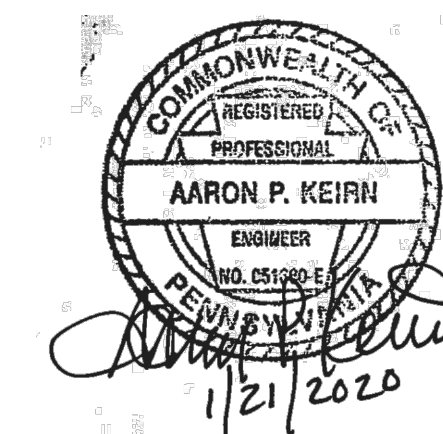


LOCATION MAP
NOT TO SCALE

DRAWING INDEX

- SHEET NO. 1 OF 3 LOC. MAP / GENERAL NOTES / DETAILS
- SHEET NO. 2 OF 3 SITE LOCATION PLAN / SCOPE OF WORK
- SHEET NO. 3 OF 3 SOIL E & S CONTROLS

Pennsylvania One Call System, Inc.
Call 3 Business Days Before You Dig!
1-800-242-1776 or 8-1-1



PENNSYLVANIA GAME COMMISSION		
STATE GAME LANDS #86	DEERFIELD and BROKENSTRAW TWP	WARREN CO.
HUNTER ACCESS PARKING IMPROVEMENTS		
LOCATION MAP / GENERAL NOTES / DETAILS		
REVISIONS	PROJECT NO.	PGC-086-19-01
▲	DRAWN BY:	A. KEIRN
▲	DATE:	1/21/2020
▲	SHEET NO.	1 OF 3